

Wafer type

Face to face dimension to ISO 5752 short, basic series 20 (BS 5155 wafer short, DIN 3202-K1)
Flange connection to ISO 7005-2 (BS EN 1092-2: 1997, DIN 2501)

Use:

For water and neutral liquids to
max. 120°C

Tests:

Hydraulic test:
Disc sealing: 1.1 x PN
Disc strength: 1.1 x PN
Body: 1.5 x PN (Min.)
Function test: 1 x open/close

Actuation:

Lever
Wormgear, with handwheel
Pneumatic actuator (Single/double acting)
Electric actuator
Extension spindle

See separate data sheets

Approvals:

DVGW
KIWA - NL
WRC approved
SVGW
JKR

Materials:

Body	Cast iron, GG-25, to DIN 1691 (BS 1452 grade 250)
External coating	Epoxy 200 µ, ral 5017
Lining	EPDM vulcanized to the body
Disc	DN ≤ 300: Stainless steel AISI 431 (BS 431S29) DN ≥ 350: Ductile iron, GGG-40, to DIN 1693, (BS 2789 grade 420 - 12 min.), coated with 340 µ epoxy
Shaft and conical pin	Stainless steel AISI 431(BS 431S29)
Top shaft sealing	DN ≤ 350: 2 EPDM O-rings placed in a bushing of bronze RG10 DN ≥ 400: EPDM O-ring placed in a bushing fixed with countersunk screws of galvanized steel 8.8
Bottom shaft sealing	DN ≤ 350: Plug of galvanized steel 8.8 with one copper sealing ring. DN ≥ 400: Axial bearing and ring of alu bronze, EPDM O-ring. Cover plate and screws of galvanized steel 8.8
Top and bottom bearing	Steel permaglide P10 coated with PTFE

Centring between pipe flanges:

DN 40 - 300	Bolts around the body
DN 350 - 600	With centring holes
DN 700 - 1000	Centring holes and tapped lugs

For additional information see technical data sheet



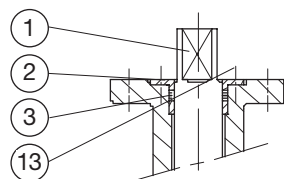
Wafer type

Face to face dimension to ISO 5752 short, basic series 20 (BS 5155 wafer short, DIN 3202-K1)

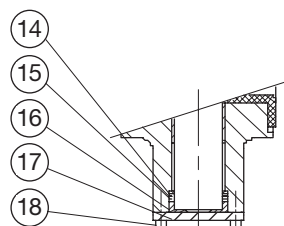
Flange connection to ISO 7005-2 (BS EN 1092-2: 1997, DIN 2501)

Component list

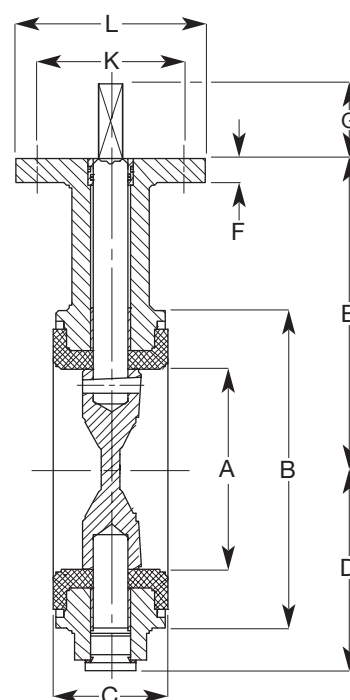
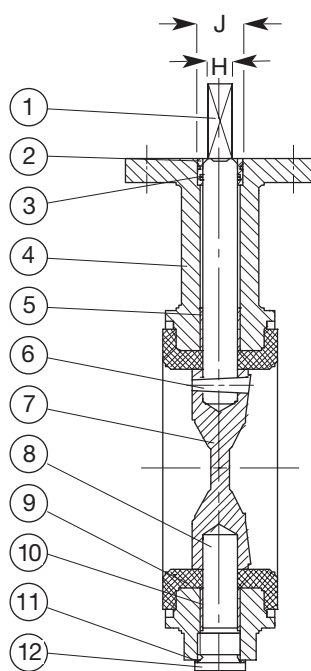
- | | | |
|----------------|------------------|-------------------|
| 1. Shaft | 7. Disc | 13. Screw |
| 2. Bushing | 8. Shaft | 14. Ring |
| 3. O-ring | 9. Lining | 15. O-ring |
| 4. Body | 10. Bearing | 16. Axial bearing |
| 5. Bearing | 11. Sealing ring | 17. Cover plate |
| 6. Conical pin | 12. Plug | 18. Screw |



DN > 350



DN > 350



Ref. nos.	DN	A mm	B mm	C mm	D mm	E mm	F mm	G mm	H mm	J mm	K mm	L mm	Top flange		SO 5211	Weight kilos
75-040-101041009	40	40	85	33	58	113	12	34	10	18	70	90	9	4	F07	2.5
75-050-101041009	50	50	100	43	63	118	12	34	10	18	70	90	9	4	F07	2.6
75-065-101041009	65	65	115	46	71	126	12	34	10	18	70	90	9	4	F07	3.2
75-080-101041009	80	80	130	46	78	133	12	34	10	18	70	90	9	4	F07	3.5
75-100-101041009	100	100	150	52	96	147	12	34	12	22	70	90	9	4	F07	4.5
75-125-101041009	125	125	182	56	109	160	12	34	12	22	70	90	9	4	F07	6.3
75-150-101041009	150	150	210	56	133	180	14	34	16	30	70	90	9	4	F07	8.8
75-200-101040009	200	200	262	60	158	204	14	34	16	30	70	90	9	4	F07	13.2
75-250-101040009	250	250	315	68	194	245	15	45	24	38	102	125	11	4	F10	22.0
75-300-101040009	300	300	371	78	219	270	15	45	24	38	102	125	11	4	F10	32.0
75-350-101240009	350	336	405	78	256	315	15	45	24	38	102	125	11	4	F10	40.0
75-400-101240009	400	386	470	102	308	363	25	50	30	90	140	175	17	4	F14	75.0
75-450-101240009	450	436	522	114	334	388	25	50	30	90	140	175	17	4	F14	90.0
75-500-101240009	500	486	576	127	360	413	25	50	30	90	140	175	17	4	F14	120.0
75-600-101240009	600	586	672	154	426	510	25	50	40	100	140	175	17	4	F14	180.0
75-700-101240009	700	686	776	165	480	560	25	60	46	110	165	210	21	4	F16	295.0
75-750-101240009	750	736	826	190	520	585	25	60	46	110	165	210	21	4	F16	325.0
75-800-101240009	800	786	880	190	525	610	25	60	46	110	165	210	21	4	F16	345.0
75-900-101240009	900	886	980	203	635	690	30	90	60	130	254	300	17	8	F25	475.0
75-010-101240009	1000	986	1085	216	685	740	30	90	60	130	254	300	17	8	F25	635.0

0 = PN 10 1 = PN 16.

Bigger sizes on request.